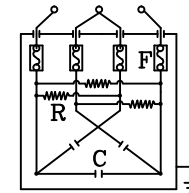


SPECIFICATIONS

- 1. Rated Voltage : See Table
- 2. Rated Frequency : 50Hz
- 3. Installation Place : Indoor type
- 4. Ambient Temperature : -25°C to + 55°C
- 5. Ability
 - Permissible over Voltage : 115% of the Rated Voltage
 - Permissible over Current : 135% of the Rated Current
- 6. Tolerance of Capacitance : -5% to +15% of Rated Value
- 7. Dissipation Factor : Maximum 0.2%
- 8. Withstanding Voltage
 - Between Terminal and Terminal : Rated Voltage x 2.15Times at 10Sec
 - Between Terminal and Case : 3000VAC 60Sec
- 9. Insulation Resistance : 1000MegOhm and up at 20°C
 - Between Terminal and Case
- 10. Sealing Ability : No Oil leaks at 70°C Constant Temperature
- 11. Discharge Resistor : Reduces Terminals Voltage to 75V or less
 - With in three minutes after disconnection
- 12. Built in Safety Device : Pressure type(Each Capacitor unit has a Protective device. If there should be a fault, the Protective device will positively Operate Preventing Secondary Probiems)
- 13. Painting Color : Munsell 5Y 7/1
- 14. Reference Standard : KS C 4801
- 15. Inner Connection



R : Discharge Device
 F : Protection Device
 C : Capacitor

****Table****

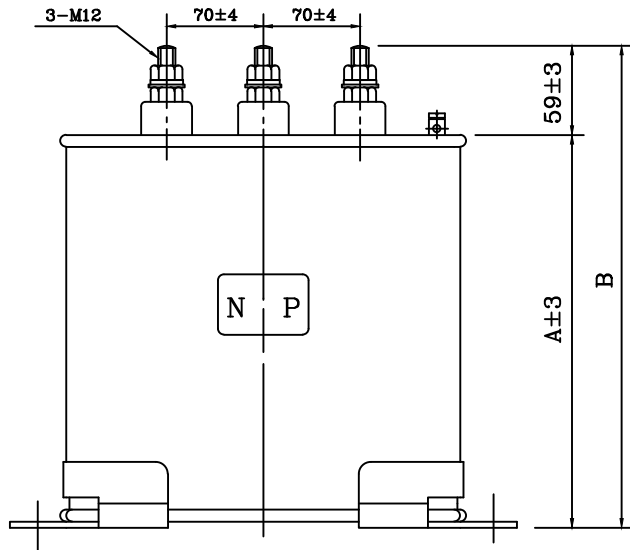
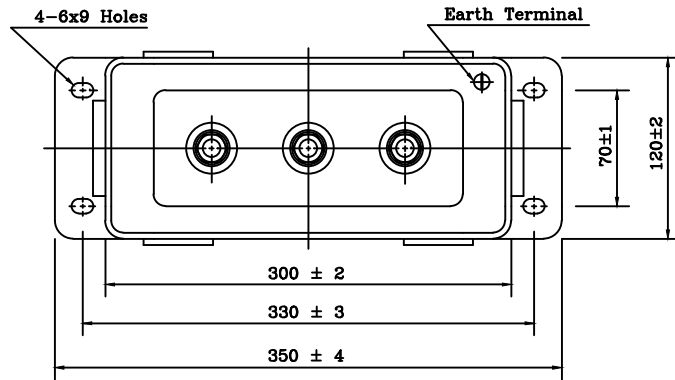
No	VAC	Type	Capacity		Current(A)	Dimension(mm)		Note
			mfd	Kvar		A	B	
1	415	ENU-41210KS	184.82	10	13.9	152	187	K41B-001
2	415	ENU-41215KS	277.23	15	20.9	202	237	K41B-002
3	415	ENU-41220KS	369.64	20	27.8	252	287	K41B-003
4								
5								
6								

*Note:Three Phases & Delta Connection

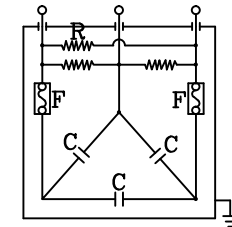
수 장 란	SCALE N/S	NAME OF PART	SHUNT POWER SH CAPACITOR				SPEC NO.
			DIM.	mm	DATE	2016.01.26	
△ x			DRAWN	CHECKED	REVIEWED	APPROVED	DRAW NO. MLO-046
△ x							
수정번호	년.월.일	수정 사항	작성자	승인자			

구도면 번은 도면변경으로 폐기하오니 반납하여 주십시오.

SPECIFICATIONS



1. Rated Voltage : See Table
2. Rated Frequency : 50Hz
3. Installation Place : Indoor type
4. Ambient Temperature : -25°C to + 55°C
5. Ability
 - Permissible over Voltage : 115% of the Rated Voltage
 - Permissible over Current : 135% of the Rated Current
6. Tolerance of Capacitance : -5% to +15% of Rated Value
7. Dissipation Factor : Maximum 0.5%
8. Withstanding Voltage
 - Between Terminal and Terminal : Rated Voltage x 2.15Times at 10Sec
 - Between Terminal and Case : 3000VAC 60Sec
9. Insulation Resistance : 1000MegOhm and up at 20°C
Between Terminal and Case
10. Sealing Ability : No Oil leaks at 70°C Constant Temperature
11. Discharge Resistor : Reduces Terminals Voltage to 75V or less
With in three minutes after disconnection
12. Built in Safety Device : Pressure type(Each Capacitor unit has a
Protective device. If there should be a
fault, the Protective device will positively
Operate Preventing Secondary Problems)
13. Painting Color : Munsell 5Y 7/1
14. Reference Standard : KS C 4801
15. Inner Connection



R : Discharge Device
F : Protection Device
C : Capacitor

****Table****

No	VAC	Type	Capacity		Current(A)	Dimension(mm)		Note
			mfd	Kvar		A	B	
1	415	ANU-41225KS	462.06	25	34.8	160	219	K41B-004
2	415	ANU-41230KS	554.47	30	41.7	170	229	K41B-005
3	415	ANU-41240KS	739.29	40	55.7	200	259	K41B-006
4	415	ANU-41250KS	924.11	50	69.6	220	279	K41B-007
5								
6								

*Note:Three Phases & Delta Connection

수 장 란	SCALE N/S	NAME OF PART	SHUNT POWER SH CAPACITOR				SPEC NO.
			DIM.	mm	DATE	2016.01.26	
△ x			DRAWN	CHECKED	REVIEWED	APPROVED	DRAW NO. MLS-180
△ x							
수정번호	년.월.일	수정 사항	작성자	승인자			

구도면 번은 도면변경으로 폐기하오니 반납하여 주십시오.